

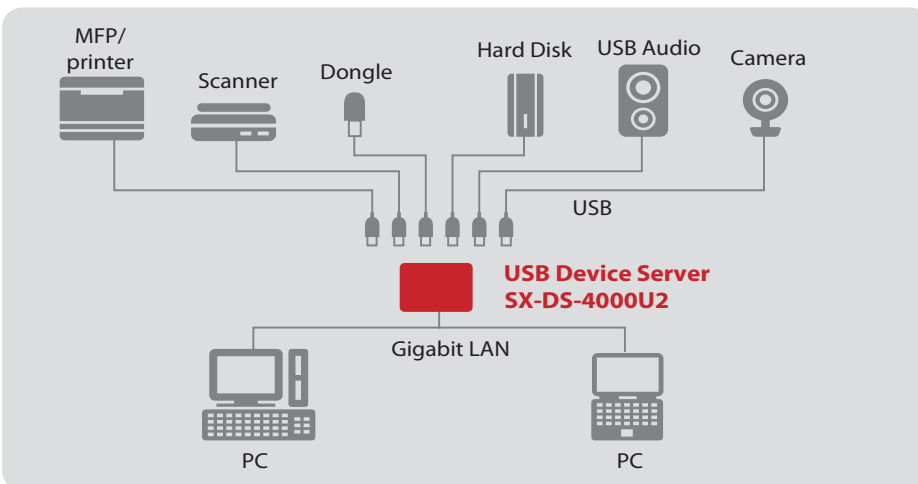
High-Performance USB Device Server SX-DS-4000U2



Networking of high-quality USB devices

The SX-DS-4000U2 is a high-performance USB Device Server with an astounding 800 MHz of computing power. The USB Virtual Link technology from silex technology makes any kind of USB device network-capable in the simplest of manners. Printers, scanners, hard drives, dongles and card readers can be used over the network via a total of 2 USB HiSpeed ports with the SX-DS-4000U2 just as though they were connected to the local computer. Multiple clients can use the same USB device one after the other, and it can be located further away from them.

Connection example



Features

- High-Performance**
 Higher data throughput due to optimized performance and Gigabit connection: Extremely powerful CPU (800MHz) and two USB 2.0 HiSpeed ports (TypeA)
- Energy-Saver Mode**
 When the device server is not used for a certain period of time, the power supply to the USB bus is turned off to save energy. The power supply to the USB bus is automatically turned back on when the server is used again.
- Print Server Function**
 Supports standard TCP/IP printing (LPR/IPP/RAW)
 The product supports the general RAW-mode, LPR-mode and IPP-mode network printing protocols. When the product is connected to a printer, the standard Windows print function can be used to print.

Function for automatic printer connection

By setting up this function using SX Virtual Link, a print job is automatically detected for a configured printer: The connection to the printer is established, the Word print process is executed and the connection is broken again. Thus the device server function simultaneously includes a print server function that is also suitable for GDI printers.

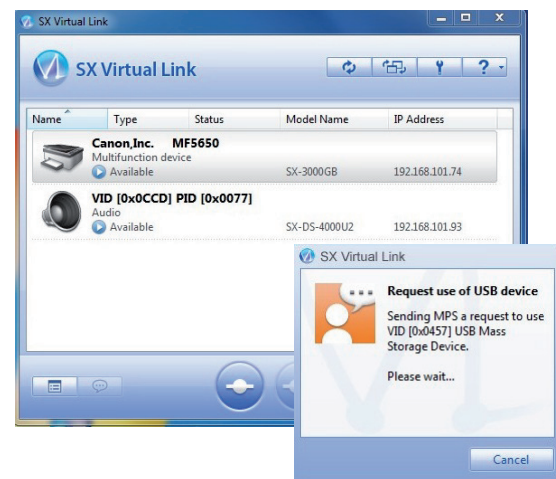
- Isochronous Transfer Mode**
 USB devices such as Webcams or USB sound cards, which require ongoing data transmission in real time, can also be used in the network environment. Both Full Speed and HiSpeed are supported.

What is a USB Device Server?

It is a network device that uses the USB Virtual Link technology to make USB devices network-ready. Thanks to the USB Virtual Link technology from silex technology, a variety of USB devices can be used on a network, just as though they were connected with a USB cable.

What is SX Virtual Link?

SX Virtual Link is a software application for the use of the USB Virtual Link technology. With SX Virtual Link, the computer can make a remote connection over the network to any USB device connected to the USB device server.



The network is searched for the product and the connected USB devices; the search results are shown in an overview on the main screen.

If another user is using a shared USB device, a request for use can be sent. It can also be specified that failure to respond to this request will automatically lead to a disconnection after a timeout.

Features, continued

With the **SX-DS-4000U2**, you can connect a variety of USB devices over the network, like USB dongles, MP3 players, CD/DVD/Zip drives, USB drives and other storage media, scanners, printers, digital cameras, USB sound cards, USB LCD monitors, telescopes, mixing consoles, and many more. The profitability of USB devices is increased by their availability as network resources.

Virtual environments: The USB Device Server is compatible with the following virtualisation programs and environments: VMware, Citrix, Microsoft Terminal Server, and Hyper-V.

No special drivers of applications are needed to use the USB devices: The drivers and applications that worked locally will continue to work.

For manufacturers: silex technology offers manufacturers the USB Virtual Link technology as an OEM product. On the hardware side there is an installation module and on the software there are two powerful SDK systems available to integrate the mature USB Virtual Link technology into any product, such as routers, access points, NAS systems or home gateways.



2 USB port – with a total of 1000mA of power supply; using the optional USB hub, up to 15 USB connections can be supported



Gigabit Ethernet connection, reset button, power connection

Other USB Device Servers

Devices such as printers, scanners, multifunction printers, storage devices are connected over the network.

USB Device Server with Gigabit support SX-3000GB



- 10 BASE-T/100 BASE-TX/1000 BASE-T (automatic detection)
- 2x USB 2.0 Hi-Speed-(Typ A)-Port
- Processor power of 250 MHz
- Print server function:
Supports standard TCP/IP printing (LPR/IPP/RAW)

Win Mac

USB Device Server with up to 300Mbit WLAN in 2.4 and 5 GHz bands SX-DS-3000WAN



- 10 BASE-T/100 BASE-TX/1000 BASE-T (automatic detection)
- 2x USB 2.0 Hi-Speed
- IEEE802.11 a/b/g/n
- Number of USB connections that can be managed: up to 15
- Supports WPS
- Print server function:
Supports standard TCP/IP printing (LPR/IPP/RAW)

Win Mac

Technical data

Product name	SX-DS-4000U2
Article number	E1232
Network interface	10 BASE-T/100 BASE-TX/1000 BASE-T (automatic detection)
Device interface	USB 2.0 HiSpeed (type A) port x 2 with a total of 1A of power supply
Protocols supports	TCP/IP
Operating systems supported	Windows 8.1,8,7 (32/64bit), Vista (32/64bit), XP, 2000, Windows Server 2012,2008,2003 (32/64bit - R1/R2). * MacOS X [PowerPC : Ver 10.3x ~ Ver 10.5x Intel : Ver 10.4.4 ~ Ver 10.9.x] *
Configuration	Setup program, Web browser, telnet
Dimensions	B: 99 mm × T: 67 mm × H: 30 mm (without rubber feet)
Weight	97 g
Power supply	Power supply 220 V AC, 50/60 Hz
Maximum power consumption	2.5 W (5 VDC 0.5 A) without USB bus power supply *1
Contents of package	Main unit, power supply, CD-ROM (setup program, user manual), setup instructions
Approvals	VCCI class B / FCC class B / CE class B

*1 When using USB devices with separate power supplies, we recommend the use of the power supply for stable operation.

* The current technical data can be found on our web site at www.silexeurope.com.

Gigabit-Ethernet USB Device Server



SX-DS-4000U2

About silex

Since 2000, silex technology europe GmbH has been a subsidiary of the Japanese company silex technology, Inc. The parent company in Japan has been involved in development and production since 1973. Thus silex technology can look back on nearly 40 years of experience and quality work. In addition to the central company headquarters in Kyoto, there are locations in Tokyo, the USA, China and Europe.

Today, the silex group is not only a world market leader in integrated network printing technology, but also a leading supplier of connectivity in the areas of USB, serial and WLAN. Many well-known manufacturers of computer peripherals rely on the technologies of silex technology and use them as OEM suppliers for their own products.

Their product line includes print, USB and serial device servers, as well as modular WLAN solutions. In addition to mature technologies and quality products, the company also offers a complete ranges of services, such as lifetime free support by telephone, email or remote access for all customers.



JQA-QMA2561
silex technology, Inc.



JQA-EM3813
silex technology, Inc.
Design & Manufaktur Center

silex technology is a registered trademark of silex technology, Inc. Other products or trade names are the registered trademarks of their owners. Changes to technical specifications and data may be made with no prior notice. © 2011 silex technology europe GmbH. All rights retained.

Global marketing and support locations:

Europe
silex technology europe GmbH
+49-2151-65009-10
Toll-free hotline in Germany:
0800-7453938
www.silexeurope.com
> contact@silexeurope.com

Japan
silex technology, Inc.
+81-774-98-3782
www.silex.jp
> support@silex.jp

USA
silex technology america, Inc.
+1-801-747-0656
Kostenfreie Hotline USA:
866-765-8761
www.silexamerica.com
> contact@silexamerica.com

China
silex technology beijing, Inc.
+86-10-8497-1430
www.silex.com.cn
> contact@silex.com.cn